

PERSONAL TOTEM PORTRAIT COMMISSIONS

Amongst indigenous people all over the earth it is seen that each human being has at least one spirit animal guide that protects and guides them.

In her totem paintings, Charlotte paints a portrait of the person in the guise of – what she calls – their ‘magical self’. They’re surrounded by the animal spirit guides that are associated with them as well as other elements that are aligned with their soul, such as a particular species of tree, landscapes etc.

If you already know what your spirit animals are then Charlotte will include them in the painting and – if you are not sure – she will tune in for you to find out.

Charlotte Phillips holds a BA Honours in Fine Art and specialised in portrait painting, she now combines this with the shamanic realm of spirit animals in what she calls totem animal paintings.

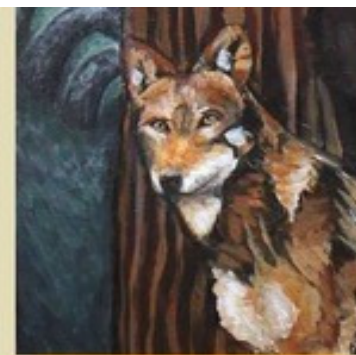
Today Charlotte works as a visionary artist, bridging the spiritual realms through her work on canvas. This means that her paintings have the ability to uplift, inspire, awaken, and empower the viewer in profound ways.

When paintings are done with a direct link to spirit like this they become objects of power that are alive and have a spirit of their own.

Paintings are acrylic on canvas, 90cm x 30cm

£795 + Postage

f 5th Dimensional Gallery
e Earthlove8@hotmail.com
u 0044 0756 291 0557



"People can study the more invisible arts of life like shamanism for decades and reach a very high level of knowledge which does not necessarily mean that they are able to "read energy" or connect to the spirit world. Charlotte has a gift that might be connected to the ability to tap into the collective consciousness, or a very developed animal intuition to look within - she closes her eyes, prays to the spirits for something to be revealed, and... in my case she was able to touch on a connection between my spirit animals and something very deep in my being in a very genuine way. It has an "Altar" energy. Thank You Charlotte."

PeterTilge, tilge.dk

"When I got my own totem painting by Charlotte I soon discovered that it captures some of the essence of me and my power animals in a very skilful and special way. The portrait is imbued with an imprint of the soul energy of myself and my animal helpers, and consequently the painting comes alive in a profound way. It is more than a portrait.

This is the old way of creating art: the paintings hold spiritual qualities, they have an element of magic, and can guide and empower the owner on their path. They are power objects."

Chris Luttichau, author

